

**Anti-FGFR2 antibody (1-100) (MDB23658)**  
MDB23658

**GENERAL INFORMATION**

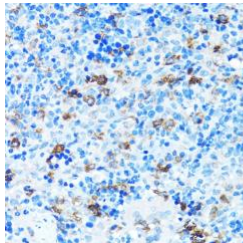
<b>Product Type</b>	Primary antibodies
<b>Short Description</b>	Rabbit polyclonal antibody anti-FGFR2 (1-100) is suitable for use in Immunohistochemistry.
<b>Applications</b>	IHC
<b>Host/Source</b>	Rabbit
<b>Reactivity</b>	Human, Mouse, Rat

**PRODUCT PROPERTIES**

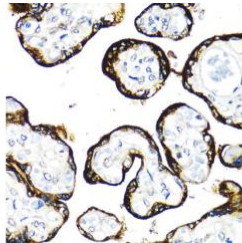
<b>Clonality</b>	Monoclonal
<b>Clone ID</b>	
<b>Concentration</b>	
<b>Conjugation</b>	Unconjugated
<b>Purification</b>	Affinity purification
<b>Dilution Range</b>	IHC 1:50-1:200
<b>Formulation</b>	PBS containing 0.02% Sodium Azide, 50% Glycerol, pH7.3.
<b>Isotype</b>	IgG
<b>Storage Instruction</b>	Store in a freezer at -20°C and avoid freeze-thaw cycles.

**TARGET INFORMATION**

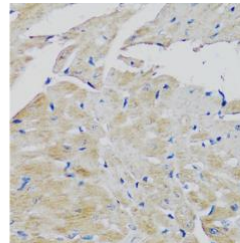
<b>Gene ID</b>	2263
<b>Gene Symbol</b>	FGFR2
<b>Uniprot ID</b>	FGFR2_HUMAN
<b>Immunogen</b>	A synthetic peptide corresponding to a sequence within amino acids 1-100 of human FGFR2 (NP_000132.3).
<b>Immunogen Region</b>	1-100
<b>Specificity</b>	
<b>Immunogen Sequence</b>	



Immunohistochemistry of paraffin-embedded rat spleen using FGFR2 antibody (STJ23658) at dilution of 1:100 (40x lens).



Immunohistochemistry of paraffin-embedded human placenta using FGFR2 antibody (STJ23658) at dilution of 1:100 (40x lens).



Immunohistochemistry of paraffin-embedded mouse heart using FGFR2 antibody (STJ23658) at dilution of 1:100 (40x lens).

This product is suitable for in-vitro studies under the RESEARCH USE ONLY [RUO] licence. This product must not be used as for diagnostic or other medical purposes.

Jl. Bandara Abdul Rahman Saleh GG 3-4 Malang, INA.  
Website: [www.medikbioindo.com](http://www.medikbioindo.com)  
Tel: (62) 341 3021374, Fax: (62) 341 3021374 · Email: [info@gbi-medika.com](mailto:info@gbi-medika.com).