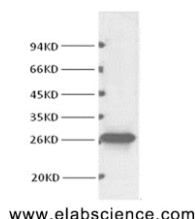


Anti Human BCL2 Monoclonal Antibody

Catalog No.	MDAB00006	Reactivity	H,M,R
Storage	Store at -20°C. Avoid freeze / thaw cycles.	Host	Mouse
Applications	WB,IHC-P	Isotype	IgG

Note: Centrifuge before opening to ensure complete recovery of vial contents.

Images



Western Blot analysis of HeLa cells using BCL2 Monoclonal Antibody at dilution of 1:1000.



Immunohistochemistry of paraffin-embedded Human tonsil tissue using BCL2 Monoclonal Antibody at dilution of 1:200.

Immunogen Information

Immunogen	Synthetic Peptide
Swissprot	P10415
Synonyms	BCL2, Apoptosis regulator Bcl-2

Product Information

Calculated MW	26kDa
Observed MW	26kDa
Buffer	PBS with 0.02% sodium azide and 50% glycerol pH 7.4.
Purify	Protein A purification
Clone No.	Clone:1B3
Dilution	WB 1:1000-2000, IHC 1:50-1:200

Background

Suppresses apoptosis in a variety of cell systems including factor-dependent lymphohematopoietic and neural cells. Regulates cell death by controlling the mitochondrial membrane permeability. Appears to function in a feedback loop system with caspases. Inhibits caspase activity either by preventing the release of cytochrome c from the mitochondria and/or by binding to the apoptosis-activating factor (APAF-1).

For Research Use Only

Thank you for your recent purchase.
If you would like to learn more about antibodies, please visit www.medikbioindo.com.

**Focus on your research
Service for life science**

Applications: WB-Western Blot IHC-Immunohistochemistry IF-Immunofluorescence IP-Immunoprecipitation FC-Flow cytometry ChIP-Chromatin Immunoprecipitation Reactivity: H-Human R-Rat M-Mouse Mk-Monkey Dg-Dog Ch-Chicken Hm-Hamster Rb-Rabbit Sh-Sheep Pg-Pig Z-Zebrafish X-Xenopus C-Cow.