

Anti-SOD antibody (19-160) (MDB29064)
MDB29064

GENERAL INFORMATION

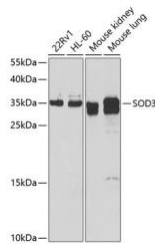
Product Type Primary antibodies
Short Description Mouse Monoclonal antibody anti-SOD (19-160) is suitable for use in Western Blot, Immunohistochemistry and Immunofluorescence.
Applications WB, IHC, IF
Host/Source Mouse
Reactivity Human, Mouse, Rat

PRODUCT PROPERTIES

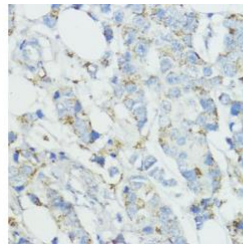
Clonality Monoclonal
Clone ID
Concentration
Conjugation Unconjugated
Purification Affinity purification
Dilution Range WB 1:500-1:2000
 IHC 1:50-1:200
 IF 1:50-1:200
Formulation PBS containing 0.02% Sodium Azide, 50% Glycerol, pH7.3.
Isotype IgG
Storage Instruction Store in a freezer at -20°C and avoid freeze-thaw cycles.

TARGET INFORMATION

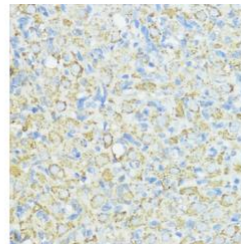
Gene ID 6649
Gene Symbol SOD3
Uniprot ID SODE_HUMAN
Immunogen Recombinant fusion protein containing a sequence corresponding to amino acids 19-160 of human SOD (NP_003093.2).
Immunogen Region 19-160
Specificity
Immunogen
Sequence



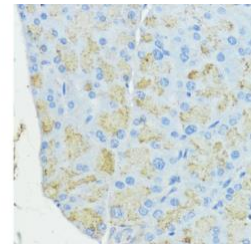
Western blot analysis of extracts of various cell lines, using SOD antibody (MDB29064) at 1:1000 dilution. Secondary antibody: HRP Goat Anti-rabbit IgG (H+L) at 1:10000 dilution. Lysates/proteins: 25µg per lane. Blocking buffer: 3% nonfat dry milk in TBST.



Immunohistochemistry of paraffin-embedded human mammary cancer using SOD antibody (MDB29064) at dilution of 1:100 (40x lens).



Immunohistochemistry of paraffin-embedded rat ovary using SOD antibody (MDB29064) at dilution of 1:100 (40x lens).



Immunohistochemistry of paraffin-embedded mouse pancreas using SOD antibody (MDB29064) at dilution of 1:100 (40x lens).

This product is suitable for in-vitro studies under the RESEARCH USE ONLY [RUO] licence. This product must not be used as for diagnostic or other medical purposes.

Jl. Bandara Abdul Rahman Saleh GG 3-4 Malang, INA.
 Website: www.medikbioindo.com
 Tel: (62) 341 3021374, Fax: (62) 341 3021374 · Email: info@gbi-medika.com.