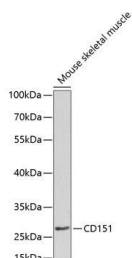


CD151 Polyclonal Antibody

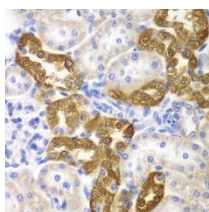
Catalog No.	E-AB-60507	Reactivity	H,M,R
Storage	Store at -20°C. Avoid freeze / thaw cycles.	Host	Rabbit
Applications	WB,IHC	Isotype	IgG

Note: Centrifuge before opening to ensure complete recovery of vial contents.

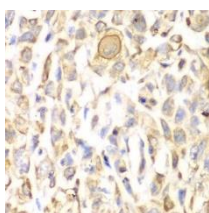
Images



Western blot analysis of extracts of Mouse skeletal muscle using CD151 Polyclonal Antibody at dilution of 1:1000.



Immunohistochemistry of paraffin-embedded Rat kidney using CD151 Polyclonal Antibody at dilution of 1:200 (40x lens).



Immunohistochemistry of paraffin-embedded Human lung cancer using CD151 Polyclonal Antibody at dilution of 1:200 (40x lens).

Immunogen Information

Immunogen	Recombinant fusion protein of human CD151 (NP_001034579.1).
GeneID	977
Swissprot	P48509
Synonyms	CD151,GP27,MER2,PETA-3,RAPH,SFA1,TSPAN2 4

Product Information

Calculated MW	28kDa
Observed MW	28kDa
Buffer	PBS with 0.02% sodium azide, 50% glycerol, pH7.3.
Purify	Affinity purification
Dilution	WB 1:500-1:2000 IHC 1:50-1:200

Background

The protein encoded by this gene is a member of the transmembrane 4 superfamily, also known as the tetraspanin family. Most of these members are cell-surface proteins that are characterized by the presence of four hydrophobic domains. The proteins mediate signal transduction events that play a role in the regulation of cell development, activation, growth and motility. This encoded protein is a cell surface glycoprotein that is known to complex with integrins and other transmembrane 4 superfamily proteins. It is involved in cellular processes including cell adhesion and may regulate integrin trafficking and/or function. This protein enhances cell motility, invasion and metastasis of cancer cells. Multiple alternatively spliced transcript variants that encode the same protein have been described for this gene.

For Research Use Only

Thank you for your recent purchase.

If you would like to learn more about antibodies, please visit www.medikbioindo.com.

**Focus on your research
Service for life science**

Applications: WB-Western Blot IHC-Immunohistochemistry IF-Immunofluorescence IP-Immunoprecipitation FC-Flow cytometry ChIP-Chromatin Immunoprecipitation Reactivity: H-Human R-Rat M-Mouse Mk-Monkey Dg-Dog Ch-Chicken Hm-Hamster Rb-Rabbit Sh-Sheep Pg-Pig Z-Zebrafish X-Xenopus C-Cow.